

ELECTRIX

box44



OWNER'S MANUAL

Table of Contents

Introduction.....	3
Box Contents	3
Controls & Connections.....	4
System Routing Diagram	6
Minimum Requirements	6
Windows ASIO Driver Installation	7
MacOS Driver Installation.....	9
Using the Control Panel.....	11
Specifications.....	13
Warranty	15
Contact	16

© 2011 Mixware, LLC. All rights reserved. Electrix is a registered trademark of Mixware, LLC.

MacOS, iTunes, and Logic are trademarks of Apple, Inc., registered in the U.S. and other countries. Windows is a trademark of Microsoft Corporation, in the United States and/or other countries. Virtual DJ is a trademark of Atomix Productions. Traktor is a trademark of Native Instruments, GmbH. Ableton Live is a trademark of Ableton AG. ASIO is a trademark and software of Steinberg Media Technologies GmbH.

Introduction

The new Electrix® Ebox-44 is the perfect audio interface for mobile applications, budget studios, computer DJ's, or even home use to convert your vinyl or CD collection to digital audio files. It is fully USB bus powered, which means it can be connected on the fly and used anywhere with just a laptop.

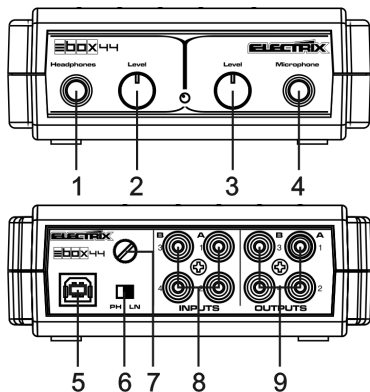
The Ebox-44 features four RCA inputs, four RCA outputs, ¼" headphones output with volume control, and ¼" microphone input with gain control. The four inputs support turntables thanks to the built-in phono preamps, ground post, and phono/line switch. The four inputs and outputs have blue LED activity indicators.

The included low latency ASIO and Core Audio drivers means flawless performance on both PC and Mac. The Ebox-44 is great for use with DJ software including Virtual DJ® and Traktor®, audio recording and production software like Logic®, Cubase®, & Ableton Live, or even everyday applications like iTunes.

Box Contents

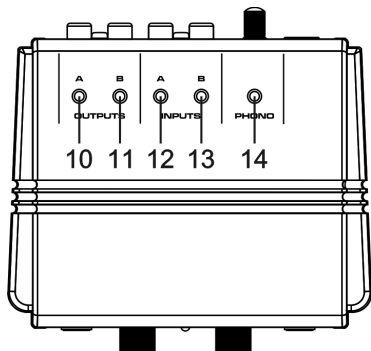
- Ebox-44 audio interface
- USB cable
- 2 RCA cables
- Installation CD
- this manual

Controls & Connections



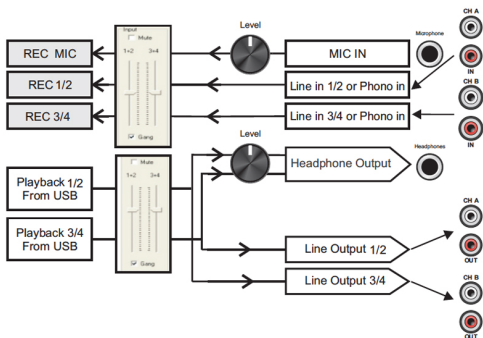
1. Headphone Jack – Connect your headphones to this jack to monitor the inputs while recording.
2. Headphone Volume – Controls the headphones output level.
3. Microphone Volume – Controls the microphone input level.
4. Microphone Input – Connect your microphone to this jack
5. USB port – Use this port to connect the interface to a free USB port on your computer using the supplied cable.
6. Phono / Line switch – Set this switch to PH when connecting turntables to inputs 1-4. Set to LN when using any other input devices.
7. Ground Post – Connect your turntable's ground cable to this post.
8. Inputs 1-4 – Connect your input devices to these jacks. All line and phono level devices are supported.
9. Outputs 1-4 – Connect these jacks to your mixer's inputs. You will set the routing using your software's routing options.

Controls & Connections



10. Output A LED's – Indicator LED's will light when a signal is present for outputs 1 and 2.
11. Output B LED's – Indicator LED's will light when a signal is present for outputs 3 and 4.
12. Input A LED's – Indicator LED's will light when a signal is present for inputs 1 and 2.
13. Input B LED's – Indicator LED's will light when a signal is present for inputs 3 and 4.
14. Phono LED – Indicates that the phono/ line (PH/LN) switch is in Phono mode.

System Routing Diagram



Minimum System Requirements

PC

Pentium III 600M MHz

Windows 98SE, ME, 2000, XP, Vista, Windows7 operating system

128MB RAM

USB port

Mac

Power Macintosh G3 or higher

Mac OS X 10.3 or higher

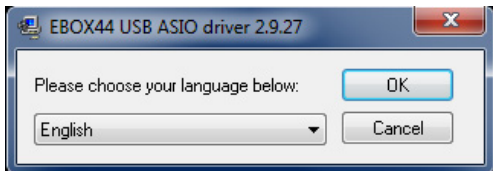
256MB RAM

USB port

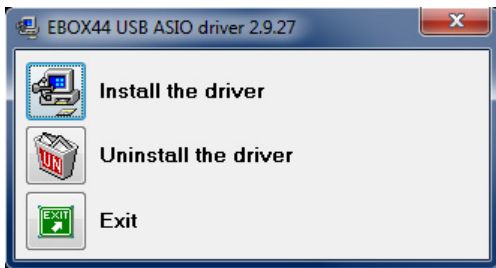
Windows ASIO Driver Installation

Insert the installation CD into your computer's CD drive and select the file "Setup.exe" to begin the installation.

1. Select the desired language and click "OK"



2. Click "Install the Driver"

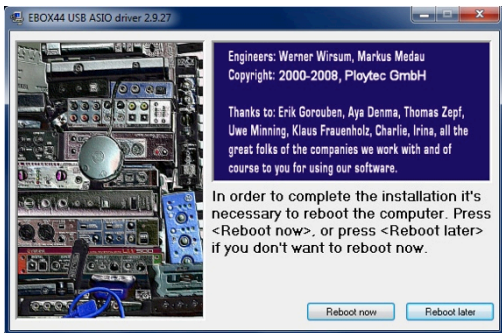


The installer will attempt to uninstall earlier drivers, if any.

3. When prompted by the installer, connect the interface to a USB port on your computer.



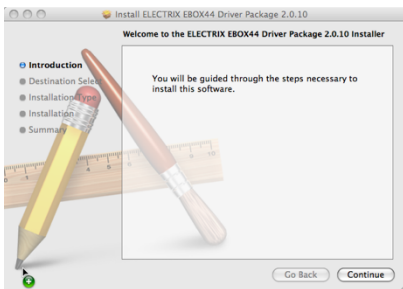
4. Click “Reboot Now” if you are ready to use the interface, or click “Reboot Later” if you need to perform additional installations. *You will need to reboot your computer before you can use the driver*



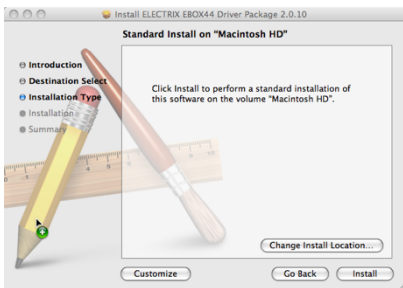
MacOS Core Audio Driver Installation

Insert the installation CD into your computer's CD drive and select the file ""ELECTRIX_EBOX44_2.0.10.mpkg"" to begin the installation.

1. Click "Continue"



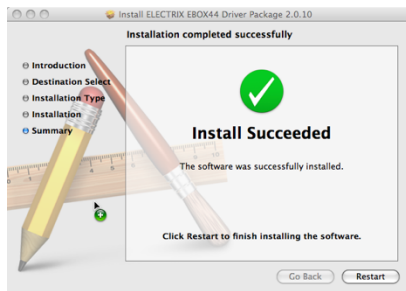
2. Click "Install"



3. You need to restart your computer to complete the installation. Save and quit any open applications and click “Continue Installation”

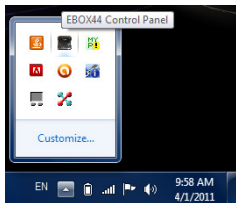


4. Click “Restart” to finish installing the driver.

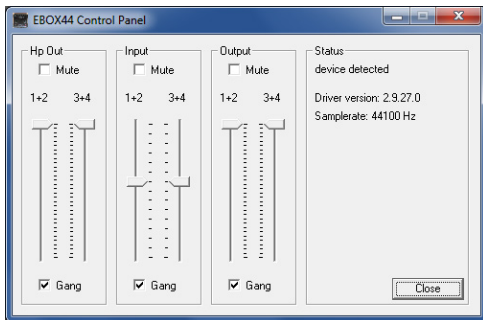


Using the Control Panel

Windows



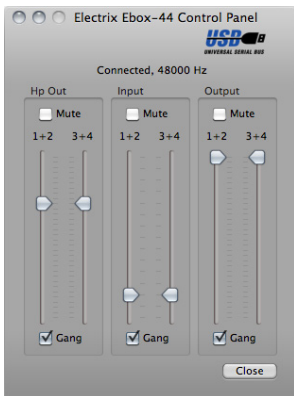
Open the Ebox-44 Control Panel by clicking on the icon in the taskbar.



With the control panel you can adjust the input and output levels individually, or in stereo pairs by selecting “Gang” for each I/O pair.

Using the Control Panel

MacOS



Navigate to your Applications folder and double click the file “Electrix Ebox-44 Control Panel” to launch the control panel.

With the control panel you can adjust the input and output levels individually, or in stereo pairs by selecting “Gang” for each I/O pair.

Technical Specifications

Power source	USB 5V, 500mA
Dimensions	4.7" x 5" x 1.8" 118.9(W) x 125(D) x 46.5(H) mm
Accessories	USB Cable (L=2000mm) RCA Cords (L=1000mm)
Weight	13oz 385g
Sample Rate	Supports 44.1K, 48K
Resolution	16 bit
Line Outputs	
Line out load	47K Ohm
Output Level	2Vrms +1/-0.5dB
Output THD	≤0.01 %
Frequency Response	20Hz-20KHz ±1dB
S/N Ratio	More than 93dB
Channel Separation	More than 90dB
Headphone Output	
Phones load	32 Ohm
Output Level	1.7Vrms ±1dB (85mW/CH)
Output THD	≤0.01 %
Frequency Response	20Hz-20KHz ±1dB
S/N Ratio	More than 90dB
Channel Separation	More than 72dB

Technical Specifications

Line Inputs

Input Impedance	
& Sensitivity	10-50K OHM,-14dBV (200mV) \pm 2dB
Frequency Response	20Hz-20KHz \pm 2dB
THD+N	\leq 0.025%
S/N Ratio	More than 80dB
Channel Separation	More than 75dB
Maximum Input	More than +7dB

Phono Inputs

Input Impedance	
& Sensitivity	47K Ohm/100PF,-54dBV (2mV) \pm 2dB
Frequency Response	20Hz-20KHz \pm 2dB
THD+N	\leq 0.1%
S/N Ratio	More than 78dB
Channel Separation	More than 75dB
Maximum Input	More than -32dBV

MIC Inputs

Input Impedance	
& Sensitivity	2.2K Ohm,-54dBV (2mV) \pm 2dB
Frequency Response	20Hz-20KHz \pm 2dB
THD+N	\leq 0.1%
S/N Ratio	More than 80dB
Maximum Input	More than -32dBV

Warranty

Electrix warrants this product to be free from defects in materials and workmanship under normal use for a period of (1) year from the date of purchase, as evidenced by the purchase receipt.

During the warranty period, Electrix shall repair or replace the product if defective. If replaced, the replacement product shall be with a product of equal or greater value. This warranty is limited to the purchaser and is not transferable. This warranty is only valid in the country of purchase.

To validate your warranty, please register your product online at www.electrixpro.com



Electrix is a division of Mixware, LLC

14730 NE 95th Street, BLDG 9

Redmond, WA 98052

Tel: (786) 362-5757

Fax: (786) 362-5756

info@mixware.net

www.electrixpro.com